

CoroMill® Plura - Versatile End Mill Kits

High performance end mills with high flexibility and cost efficiency



Versatile tools designed for high performance and secure machining in a variety of materials, applications, component sizes and shapes, allowing maximum machine utilization.



Product Range

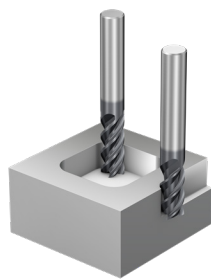
- High quality grades for all materials
- Cylindrical and Weldon shank options
- Ball nose and chamfering tools
- Robust geometries for different applications
- Can be reconditioned up to three times to original specifications



Performance for every application



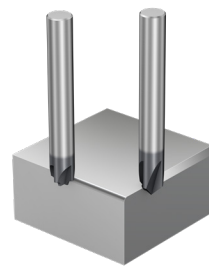
Heavy roughing



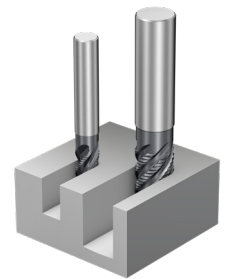
Medium roughing



Profiling



Chamfer milling



Roughing with chipbreaker

For your most demanding machine utilization in various components and for variable production you need tools with the highest precision, robustness and versatility. When precision, stability and cost-efficient machining is paramount, **CoroMill® Plura Versatile** is your first choice.



CoroMill® Plura - Versatile End Mill Kits



Kit Number	Product Code	Application	Material	Edges	DC (mm)	LU (mm)
7800550 (1P220-XB_K)	1P220-0575-XB 1630	Heavy Roughing	P,K,M,N,S,O	2	5.75	7.5
	1P220-0775-XB 1630				7.75	9.5
	1P220-0970-XB 1630				9.70	11.5
	1P220-1170-XB 1630				11.70	12.5
7800551 (1P330-XA_K)	1P330-0600-XA 1620	Medium Roughing	M,N,P,K,H	3	6.00	10
	1P330-0800-XA 1620				8.00	16
	1P330-1000-XA 1620				10.00	19
	1P330-1200-XA 1620				12.00	22
7800552 (1P330-XB_K)	1P330-0600-XB 1620	Medium Roughing	M,N,P,K,H	3	6.00	10
	1P330-0800-XB 1620				8.00	16
	1P330-1000-XB 1620				10.00	19
	1P330-1200-XB 1620				12.00	22
7800553 (1P360-XA_K)	1P360-0600-XA 1620	Medium Roughing	M,N,P,K,H	4	6.00	22
	1P360-0800-XA 1620				8.00	28
	1P360-1000-XA 1620				10.00	32
	1P360-1200-XA 1620				12.00	40
7800554 (1P341-XB_K)	1P341-0600-XB 1630	Medium Roughing	P,K,M,N,S,O	4	6.00	13
	1P341-0800-XB 1630				8.00	19
	1P341-1000-XB 1630				10.00	22
	1P341-1200-XB 1630				12.00	26
7800555 (1B230-XA_K)	1B230-0600-XA 1630	Profiling	P,K,M,N,S,O	2	6.00	10
	1B230-0800-XA 1630				8.00	16
	1B230-1000-XA 1630				10.00	19
	1B230-1200-XA 1630				12.00	22
7800556 (1P220-XA_KI)	1P220-0318-XA 1630	Heavy Roughing	P,K,M,N,S,O	2	3.18 (1/8")	4.37
	1P220-0635-XA 1630				6.35 (1/4")	7.93
	1P220-0953-XA 1630				9.53 (3/8")	11.907
	1P220-1270-XA 1630				12.70 (1/2")	15.875
7800557 (1P330-XA_KI)	1P330-0318-XA 1620	Medium Roughing	M,N,P,K,H	3	3.18 (1/8")	7.54
	1P330-0635-XA 1620				6.35 (1/4")	10.72
	1P330-0953-XA 1620				9.53 (3/8")	18.26
	1P330-1270-XA 1620				12.70 (1/2")	23.42
7800558 1P360-XA_KI	1P360-0318-XA 1620	Medium Roughing	M,N,P,K,H	4	3.18 (1/8")	12.7
	1P360-0635-XA 1620				6.35 (1/4")	22.225
	1P360-0953-XA 1620				9.53 (3/8")	30.96
	1P360-1270-XA 1620				12.70 (1/2")	42.86
7800559 (1P341-XA_KI)	1P341-0318-XA 1630	Medium Roughing	P,K,M,N,S,O	4	3.18 (1/8")	7.938
	1P341-0635-XA 1630				6.35 (1/4")	13.49
	1P341-0953-XA 1630				9.53 (3/8")	21.43
	1P341-1270-XA 1630				12.70 (1/2")	27.78